

# THE WINDSOR GOLD



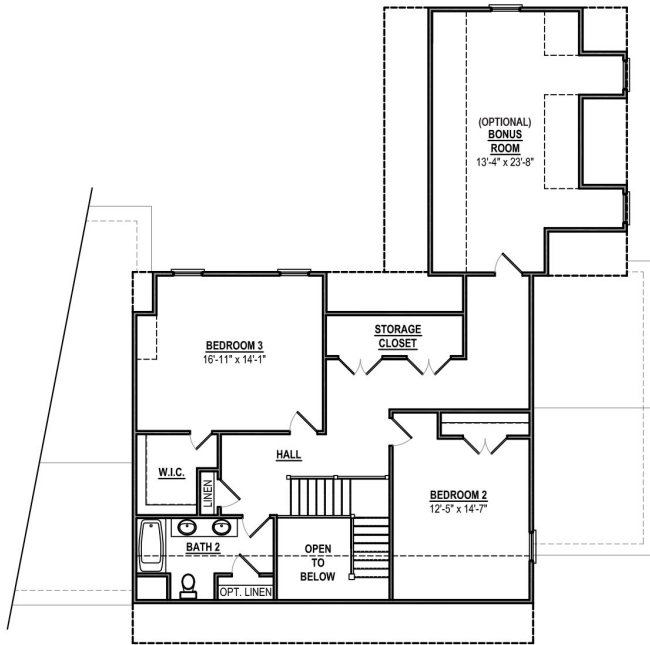
## INCLUDED LUXURIES:

- Over 3,200 Square Feet
- 3 to 4 Bedrooms over 2 Floors
  - 2.5 to 3.5 Bathrooms
- Luxurious First Floor Owner's Suite
- 2-3 2nd Floor Guest Bedrooms and Walk-In Storage
- Efficient Design Allows Use of Every Square Inch!
  - 2.5 Car Over-Sized Garage
- Endless Architecture Options, Including Many other Custom Elevations

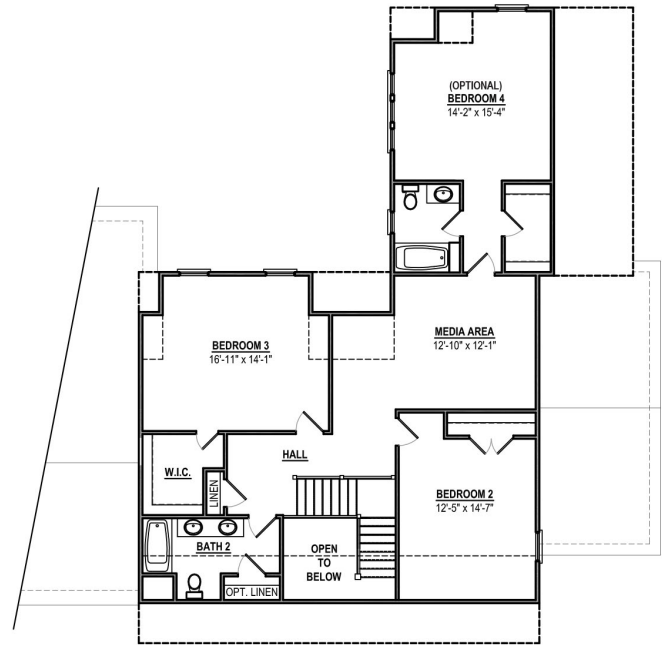


FOR MORE INFORMATION, PLEASE VISIT  
[www.HomesmithVA.com](http://www.HomesmithVA.com) or call The Yeatman Group at **804.NEW.HOME**  
[sales@theyeatmangroup.com](mailto:sales@theyeatmangroup.com)

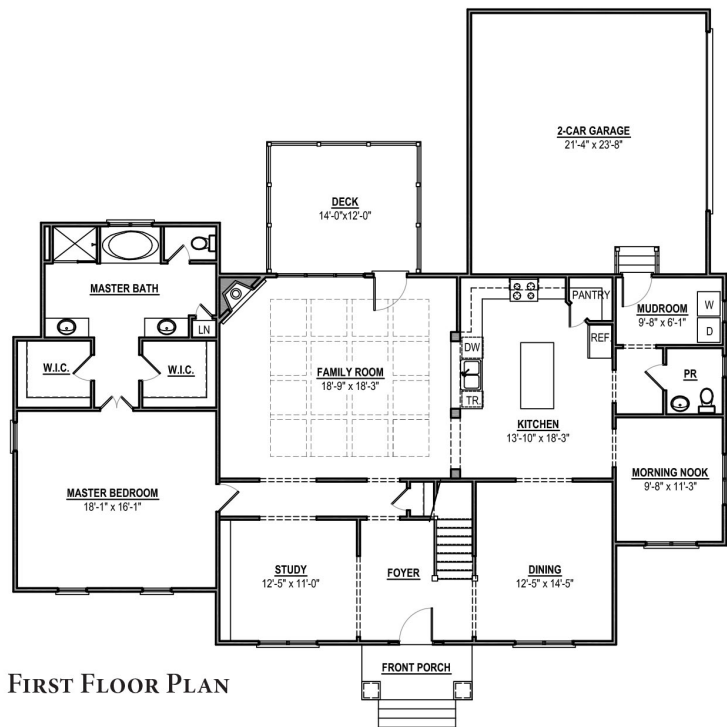
# THE FLOORPLAN



**SECOND FLOOR PLAN**  
3 BEDROOM, 2½ BATH



**SECOND FLOOR PLAN**  
4 BEDROOM, 3½ BATH



**FIRST FLOOR PLAN**

\*Renderings and floorplans may be shown with optional upgrades. Your choices are endless. Ask us for details.

\*\*Floor Plan drawings are an artist's rendition of the design. Some minor details and dimensions may differ from actual plans. Be sure to reference the "Included Features" list for your community to confirm what features are included as some shown may be optional.

All prices and specifications are subject to change without notice © 2016 Homesmith Construction Inc.

FOR MORE INFORMATION, PLEASE VISIT  
[www.HomesmithVA.com](http://www.HomesmithVA.com) or call The Yeatman Group at 804.NEW.HOME  
[sales@theyeatmangroup.com](mailto:sales@theyeatmangroup.com)

