

THE KESWICK II



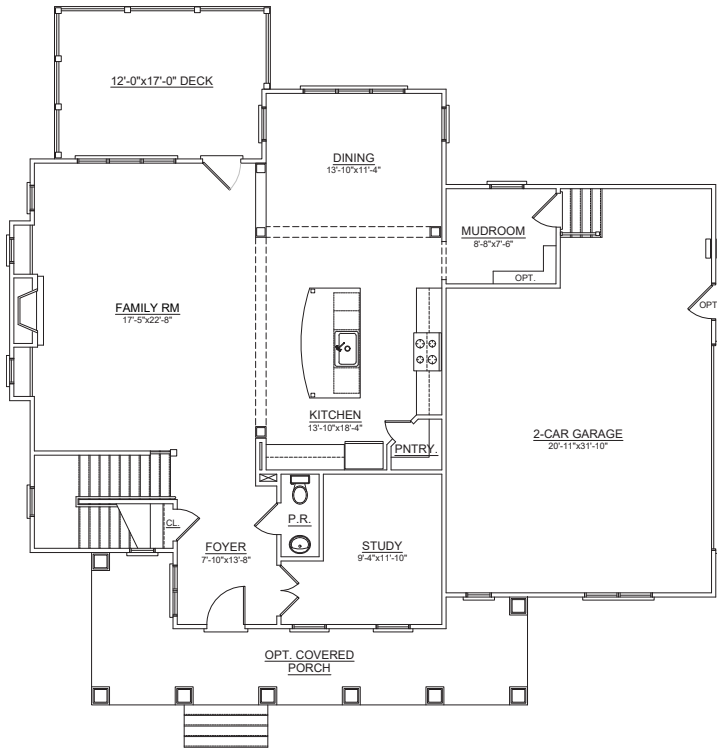
INCLUDED LUXURIES:

- Over 3,200 Square Feet
 - 4 Bedrooms
 - 2.5 to 3.5 Bathrooms
- Spacious Open Layout Ideal for Entertaining
- Replaces Traditional Formal Rooms with Oversized Living Areas
 - 2.5 Car Over-Sized Garage
- Endless Architecture Options, Including Many other Custom Elevations



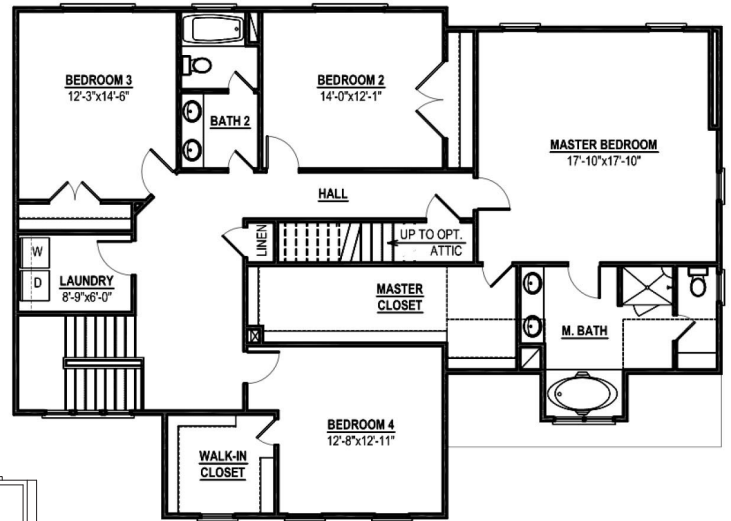
FOR MORE INFORMATION, PLEASE VISIT
www.HomesmithVA.com or call The Yeatman Group at **804.NEW.HOME**
sales@theyeatmangroup.com

THE FLOORPLAN

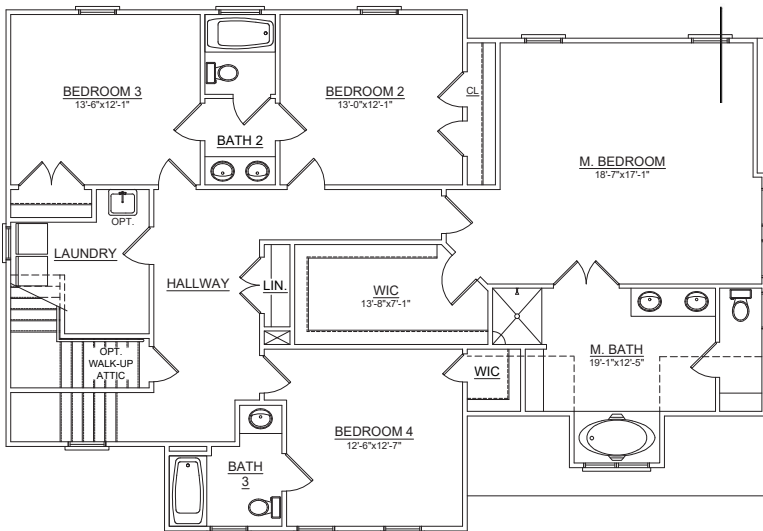


First Floor

Second Floor
4 BEDROOM, 2.5 BATH



First Floor
4 BEDROOM, 3.5 BATH



*Renderings and floorplans may be shown with optional upgrades. Your choices are endless. Ask us for details.
 **Floor Plan drawings are an artist's rendition of the design. Some minor details and dimensions may differ from actual plans. Be sure to reference the "Included Features" list for your community to confirm what features are included as some shown may be optional.
 All prices and specifications are subject to change without notice © 2016 Homesmith Construction Inc.

FOR MORE INFORMATION, PLEASE VISIT
www.HomesmithVA.com or call The Yeatman Group at 804.NEW.HOME
sales@theyeatmangroup.com

