

# THE NEWPORT



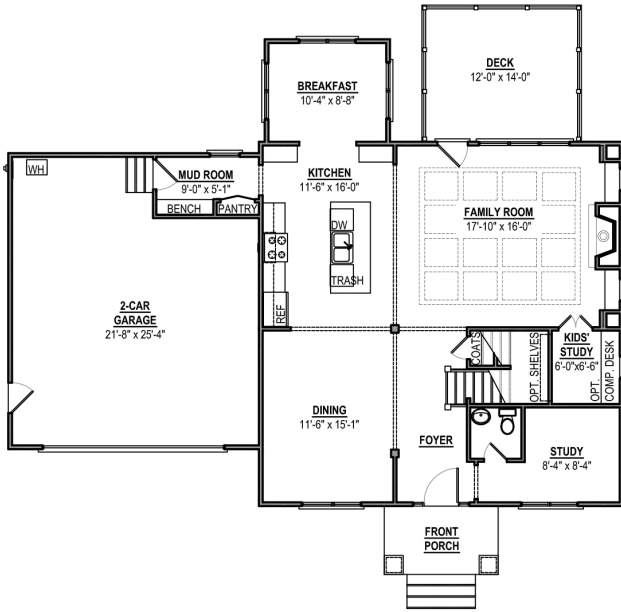
## INCLUDED LUXURIES:

- Over 2,700 Square Feet
- 4 BRs Over 2 Floors (3rd Floor and Basement Optional)
  - 2.5 or 3.5 Bathrooms
  - Private Master BR with Dual Master Closets
- Adult Study, Kid's Study, and Nursery/ Play room / or Flex room
  - 2.5 Car Over-Sized Garage
- Endless Architecture Options, Including Many other Custom Elevations

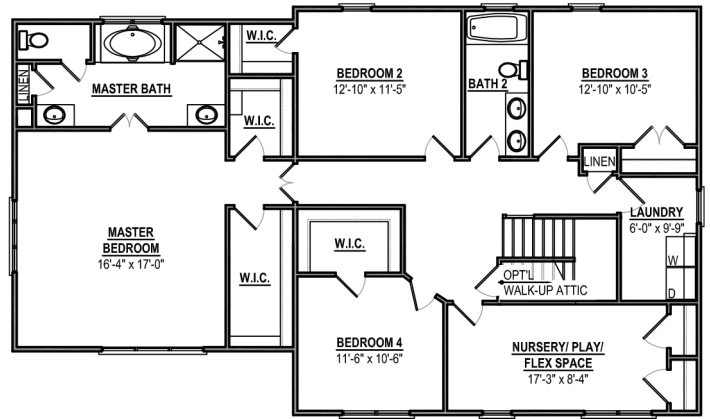


FOR MORE INFORMATION, PLEASE VISIT  
[www.HomesmithVA.com](http://www.HomesmithVA.com) or call The Yeatman Group at **804.NEW.HOME**  
[sales@theyeatmangroup.com](mailto:sales@theyeatmangroup.com)

# THE FLOORPLAN

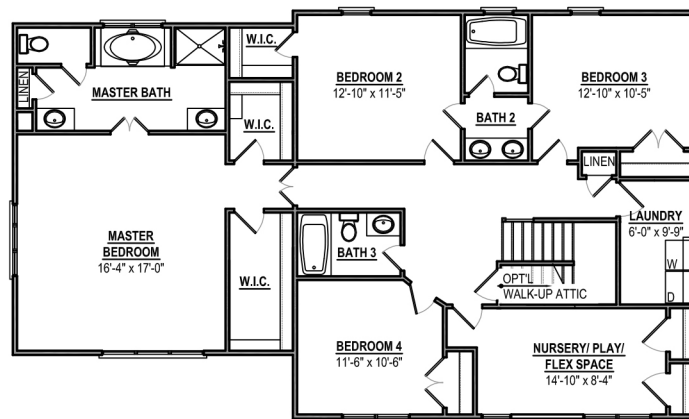


*First Floor*



*Second Floor*

4 BEDROOM, 2.5 BATH



*Second Floor*

4 BEDROOM, 3.5 BATH

\*Renderings and floorplans may be shown with optional upgrades. Your choices are endless. Ask us for details.

\*\*Floor Plan drawings are an artist's rendition of the design. Some minor details and dimensions may differ from actual plans. Be sure to reference the "Included Features" list for your community to confirm what features are included as some shown may be optional.

All prices and specifications are subject to change without notice © 2016 Homesmith Construction Inc.

FOR MORE INFORMATION, PLEASE VISIT  
[www.HomesmithVA.com](http://www.HomesmithVA.com) or call The Yeatman Group at 804.NEW.HOME  
[sales@theyeatmangroup.com](mailto:sales@theyeatmangroup.com)

